

you can
Canon

A4 PLAIN PAPER BUBBLE JET FAX

FAX-B840
FAX-B820

Flawless faxing performance
at a perfect price



OFFICIAL SUPPLIER

Adding style and efficiency to high quality faxing.



Profit from affordable and efficient faxing, with the FAX-B820 or FAX-B840. High capacity fax memory, unique voice recognition dialling and ease of use are complemented by Canon's renowned Bubble Jet printing quality. The difference between the two models is a convenient telephone answering machine on the FAX-B840. The similarity is high quality faxing at all times.

MORE MEMORY FOR WORRY-FREE FAXING

With a high capacity 120-page¹ fax memory for worry-free faxing, the FAX-B820 and FAX-B840 offer great performance. All your incoming faxes are stored safely in memory should paper or ink run out during the evening or weekend - for printing out later. Also your outgoing faxes can be scanned in advance, enabling labour-saving sending from memory.

THE SMART SOLUTION: COMPLETE COMMUNICATION

Thanks to a total fax, telephone and answering machine solution, you'll never miss another message. With the FAX-B840 you benefit from a built-in digital Telephone Answering Machine, to take all your messages when out of the office. Or, for the FAX-B820, an external answering machine can be easily connected. Both models have a built-in handset allowing convenient telephone use.

¹ Based on ITU-T Standard Chart No.1

SIMPLY TALK TO SEND A FAX

Both the FAX-B820 and FAX-B840 offer voice recognition dialling, to increase ease and efficiency. With Canon's unique UCanTalk® technology, simply pre-programme the names of people you fax most often - and then sending out a fax is as simple as pushing one button and saying their name.



HIGH QUALITY FOR FLAWLESS FAXING

Make sure your customers or clients benefit from the best quality. When you're transmitting diagrams, fine text and even photos, Canon's exclusive UHQ (Ultra High Quality) image processing technology, with 64 grey scale levels, ensures great depth and clarity. You can even use your fax as a copier, capturing details accurately.

COST SAVING FEATURES

Transmission time is a fast 6 seconds per page¹, to help cut down your phone costs. Furthermore, a special Ink Saver mode allows you to almost double the amount of pages you can receive² - reducing ink costs. So you save all-round.

² Normal mode: 850 pages.
Ink Saver mode: 1500 pages.

QUICK AND EASY OPERATION

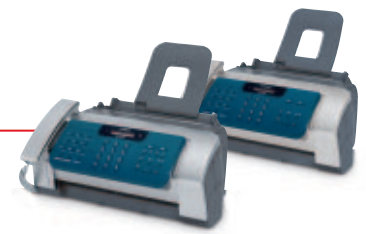
A capable 15-page ADF (Automatic Document Feeder) allows you to send large faxes more easily, without the need to split them. 9 one-touch and 70 coded keys accelerate operation for all the numbers you call most often. A clear control panel ensures easy faxing - and phone numbers for incoming calls are clearly shown on the LCD display and stored in memory for quick redialling³.

³ Dependent on telecom provider.
Stores the last 20 numbers.

STYLISH AND COMPACT

Attractive in any surroundings, these two stylish and compact fax machines fit neatly on the smallest desktop. You save on installation space and - whichever model you choose - you can be sure of high quality faxing and sheer simplicity.





Specifications FAX-B840 / FAX-B820

FAX UNIT TYPE	
Type	FAX-B820 - Standard facsimile with handset FAX-B840 - Standard facsimile with Telephone Answering Machine and handset
Compatibility	Group 3
Applicable line	PSTN
Print technology	Bubble Jet printing
Scanner type	Sheet fed
FAX SCANNING FEATURES	
Automatic document feeder	15 sheets
Document size	Width: 216 mm (Max) - 148 mm (Min) Length: 700 mm (Max) - 105 mm (Min)
Effective scanning width	208 mm
Fax resolution	Fine: 8 dots x 7.7 lines / mm Standard: 8 dots x 3.85 lines / mm
Image processing system	UHQ (Ultra High Quality)
Halftone	64 shades of grey scale
FAX PRINTING FEATURES	
Printing method	Bubble Jet Printing
Print resolution	360 x 360 dpi
Paper capacity	50 sheets Auto Sheet Feeder
Print cartridge	BX-3 Black Cartridge
Printing width	203 mm
Ink save mode	Yes
Auto image reduction on reception	Yes (Fixed)
TRANSMISSION AND RECEPTION FEATURES	
Transmission speed	Approx. 6 seconds per page (based on ITU-T No.1 chart)
Modem speed	14.4K bps (Transmission) 9.6K bps (Reception)
Compression method	MH, MR, MMR
Direct transmission	Yes
FAX memory	120 pages (based on ITU-T Standard Chart No. 1)
Dual access	Yes (Semi Dual)
Error correction mode (ECM)	Yes
Delayed transmission	Yes
Sequential broadcast	Yes (80 locations)
Polling transmission	No
Reception	Yes
Direct Mail prevention	Yes
MANAGEMENT FEATURES	
Reports and Lists	Activity report, Transmission report, Reception report, Multi TX/RX reports, One-touch/Coded speed dialing list, User's data list, Doc. memory list
Transmission header	Yes
One touch dials	9 locations
Coded dials	70 locations
Redial	Yes (Automatic and Manual)
FAX/TEL auto switch	Yes

Built in answering machine	Yes (FAX-B840 only)
Total recording time	Approx. 10 minutes
Number of messages	55
Out Going Message	1 (max 20 secs)
Remote operation	Yes
Time stamp	Yes (LCD only)
Call screening	Yes
Toll Saver	Yes
Answering machine hook up	Yes (FAX-B820 only)
Extension hook up	Yes
Remote reception	Yes
Caller ID	Yes ¹
Telephone handset	Yes
Cradle	Built in
Voice Dialling (U Can Talk)	Yes
COPIER FEATURES	
Mono Copy	Yes
Direct copy	Yes
Copy resolution	360 x 360 dpi
Multiple copy	Up to 99 copies
Display Type	LCD
Size	16 x 1
Languages	16 languages (English, German, French, Spanish, Italian, Swedish, Norwegian, Dutch, Finnish, Danish, Portuguese, Slovenian, Czech, Hungarian, Russian, Polish)
GENERAL FEATURES	
Dimensions without trays and handset	366(W) x 261(D) x 161(H) mm
Dimensions with trays and handset	366(W) x 381(D) x 265(H) mm
Installation space including trays & handset	366(W) x 389(D) x 281(H) mm
Weight	Approx. 3.7 kg
Power source	AC 200-240V 50-60Hz
consumption	3.2 W (standby), 33.14 W (Max)
Acoustic Noise Levels	Max. less than 50db (Copying)
<p>¹ Caller ID is only available in some countries. To use this feature, you will need to subscribe for a Caller ID service (only available in some countries). The Caller ID feature uses the ETSI EN 300 778-1 protocol. Contact your local telephone company for detailed information on this service.</p> <p>Some images are simulated for clarity of reproduction. All data is based on Canon's standard testing methods. Specifications are subject to change without notice. ™ and ®: All company and/or product names are trademarks and/or registered trademarks of their respective manufacturers in their markets and/or countries.</p>	



you can
Canon

Canon Inc
www.canon.com

Canon Europa NV
www.canon-europe.com

© Canon Europa NV 2004

Canon (UK) Ltd
Woodhatch
Reigate,
Surrey RH2 8BF
T: 08705 143 723

www.canon.co.uk

